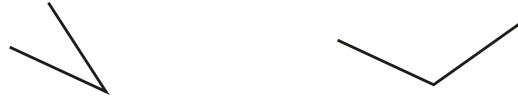


1 Here are some angles.

a) Which of the angles is greater than a right angle?



b) Which of the angles is less than a right angle?



2 Draw three different angles that are less than a right angle.

Compare answers with a partner.

Complete the sentence.

These are all examples of _____ angles.



3 Draw three different angles that are greater than 1 right angle but less than 2 right angles.

Compare answers with a partner.

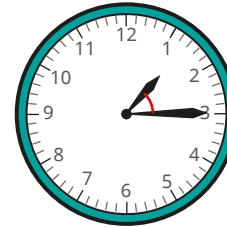
Complete the sentence.

These are all examples of _____ angles.

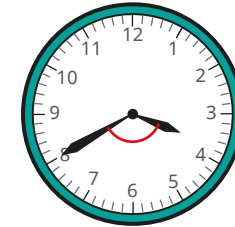


4 Is the angle between the hands of the clock acute or obtuse?

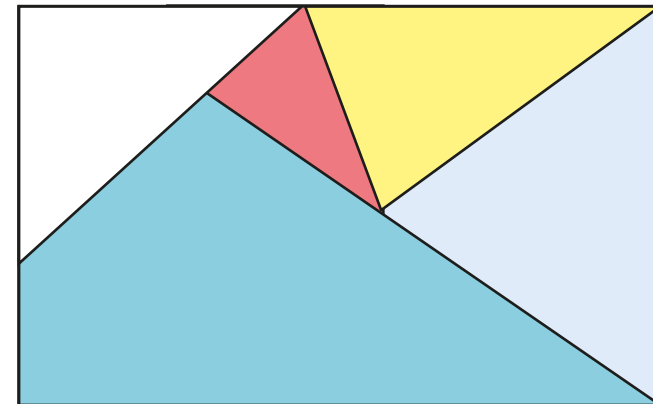
a)



b)



5 Here is a piece of wallpaper.



a) Find two right angles on the wallpaper.

b) Find four acute angles on the wallpaper.

c) Find two obtuse angles on the wallpaper.

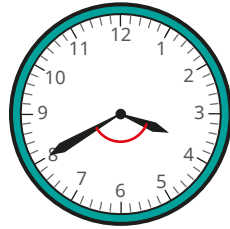


4 Is the angle between the hands of the clock acute or obtuse?

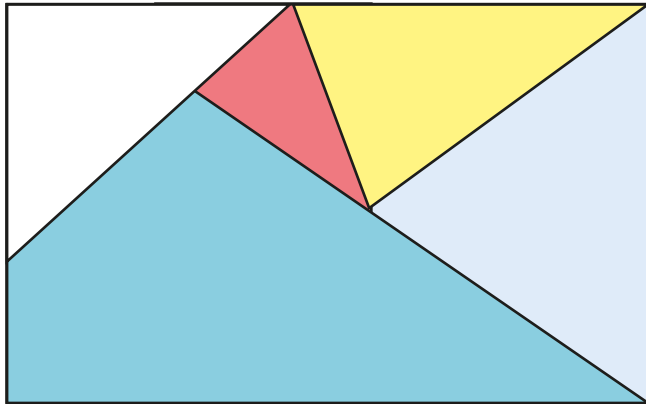
a)



b)



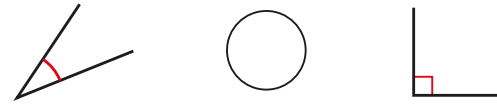
5 Here is a piece of wallpaper.



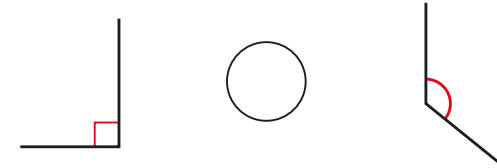
- Find two right angles on the wallpaper.
- Find four acute angles on the wallpaper.
- Find two obtuse angles on the wallpaper.

6 Write $<$, $>$ or $=$ to compare the sizes of the angles.

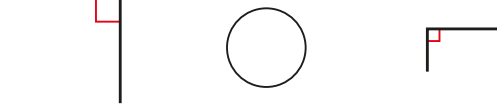
a)



b)



c)



7 Draw a shape that has one right angle, two acute angles and one obtuse angle.

Compare answers with a partner.

What is the same and what is different about your shapes?