

1 Write the times of day in order of when they happen.

afternoon morning midnight midday evening

2 Match the description to the correct number.

months in a year	5
days in a week	168
hours in a day	31
days in a non-leap year	7
hours in a week	24
days in a school week	365
maximum number of days in a month	12

3 Fill in the missing hours, days and weeks.

a) 1 day = 24 hours

days = 48 hours

4 days = hours

days = 960 hours

41 days = hours

b) 1 week = 7 days

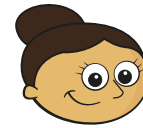
2 weeks = days

weeks = 21 days

60 weeks = days

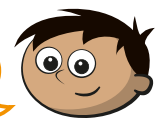
63 weeks = days

4 Aisha arrives home at 11 o'clock.



It must be nearly lunchtime.

Dora



It must be dark outside.

Amir

Who is correct? **Dora** **Amir** **neither** **cannot tell**

Talk about it with a partner.

5 There are 5 days in a school week.

a) What is the difference in the number of days in 4 **school weeks** compared to 4 whole weeks?

b) There are 6 hours in a school day.

How many more hours are there in 5 full days than 5 school days?

Talk to a partner about how you worked out your answers.

6 Kim and Dexter are working out how many more hours there are in the month of August than September.



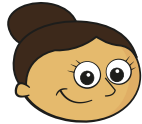
I can work out how many hours there are in August in total, how many hours there are in September in total and subtract one from the other.

Kim thinks there is an easier way of working it out.

What might Kim's method be?

Talk about it with a partner.

- 4 Aisha arrives home at 11 o'clock.



It must be nearly lunchtime.

Dora



It must be dark outside.

Amir

Who is correct? **Dora** **Amir** **neither** **cannot tell**

Talk about it with a partner.



- 5 There are 5 days in a school week.

a) What is the difference in the number of days in 4 **school weeks** compared to 4 whole weeks?

b) There are 6 hours in a school day.
How many more hours are there in 5 full days than 5 school days?

Talk to a partner about how you worked out your answers.



- 6 Kim and Dexter are working out how many more hours there are in the month of August than September.



I can work out how many hours there are in August in total, how many hours there are in September in total and subtract one from the other.

Kim thinks there is an easier way of working it out.

What might Kim's method be?

Talk about it with a partner.

- 7 There are 720 hours in April.

How many hours are there in January?

How did you work it out?

Talk about it with a partner.



- 8 Is the statement always true, sometimes true or never true?

There are more days in October than September.
Therefore, there are more school days in October than September.

Talk about it with a partner.



- 9 Esther goes to school for 6 hours each day.

There are no school holidays in the month of March.

How many hours could Esther spend at school in March?

Compare answers with a partner.

