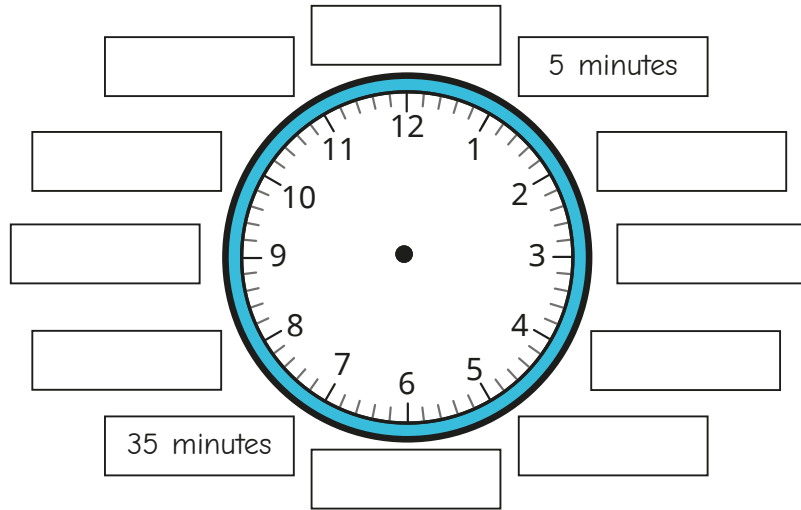
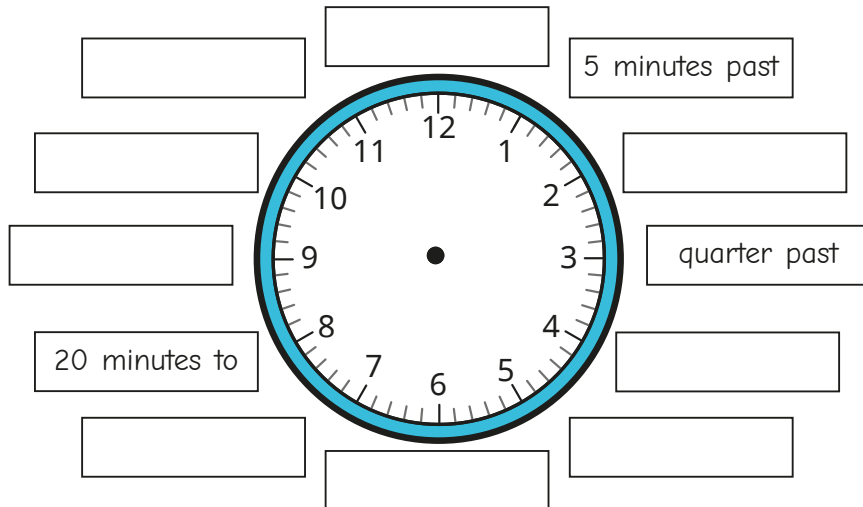


- 1 Label the clock to show the number of minutes past the hour.



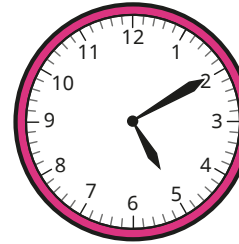
- 2 Label the clock to show what time would be shown if the minute hand was pointing to each interval.



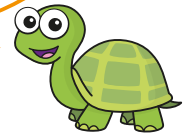
Is there more than one possible answer for each label?



- 3 Tiny is telling the time.

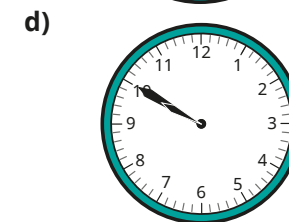
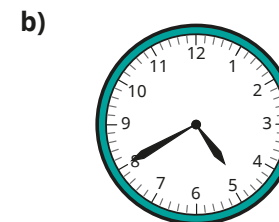
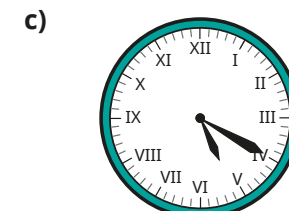
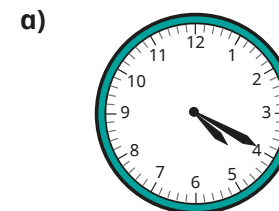


The hour hand is pointing just after 5 and the minute hand is pointing to 2, so the time is 2 minutes past 5



- a) What mistake has Tiny made?
b) What time is it?

- 4 What time is shown on each clock?

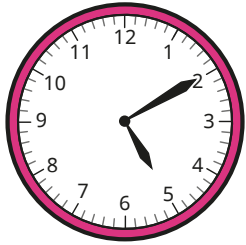


- 5 Draw hands on a blank clock to show each time.

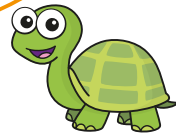
- a) 15 minutes past 6 c) 25 minutes to 9
b) quarter to 9 d) 5 minutes to 12



3 Tiny is telling the time.

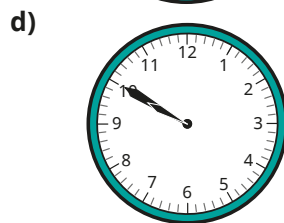
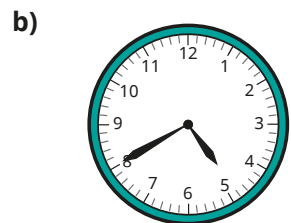
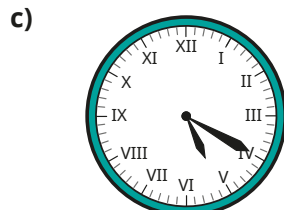
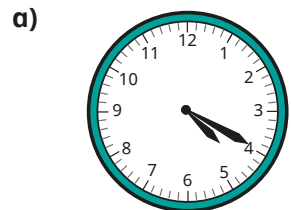


The hour hand is pointing just after 5 and the minute hand is pointing to 2, so the time is 2 minutes past 5



- a) What mistake has Tiny made?
- b) What time is it?

4 What time is shown on each clock?

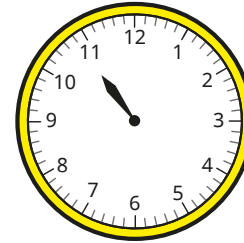


5 Draw hands on a blank clock to show each time.

- a) 15 minutes past 6
- b) quarter to 9
- c) 25 minutes to 9
- d) 5 minutes to 12



6 Jack wants to tell the time, but the minute hand has fallen off the clock.



The time must be something to the hour.



Do you agree with Jack?
Talk about it with a partner.

7 The minute hand and the hour hand of a clock are both pointing to an even number.

What times could it be?
Give three possible answers.

Compare answers with a partner. Can you find any more?

8 The numbers of the clock face were written in Roman numerals but they have been rubbed off.

The current time has a V in the hour and a V in the minutes.

What time could it be?
Are there any other answers?
Talk about it with a partner.

