



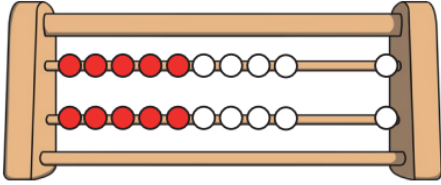
Year 1 Maths Home Learning Challenge

Friday 6th February 2026

This week we have been revising our knowledge of 'doubles' and 'near doubles'.
When you double any number, the total will be EVEN.

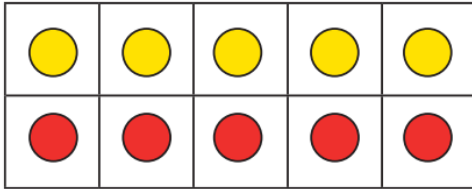
Activity 1:

1) Write a double calculation to match each representation.



a) + =

b) + =



c) + =

d) + =

Activity 2:

Solve these double calculations.

$1 + 1 =$	$6 + 6 =$
$2 + 2 =$	$7 + 7 =$
$3 + 3 =$	$8 + 8 =$
$4 + 4 =$	$9 + 9 =$
$5 + 5 =$	$10 + 10 =$

Activity 3:

Use the clues to identify each player's score.

My score is double player 2's score.



Player 1

My score is double player 4's score.



Player 2

My score is double player 1's score.



Player 3

My score is double 1.



Player 4

Activity 4:

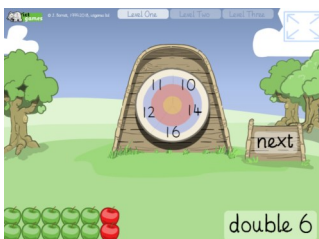
Use double facts to solve these near double facts.

Double the smallest addend and then add one more.

Double	Near Double
 $2 + 2 = \underline{\quad}$	 $2 + 3 = \underline{\quad}$
 $3 + 3 = \underline{\quad}$	 $3 + 4 = \underline{\quad}$
 $4 + 4 = \underline{\quad}$	 $4 + 5 = \underline{\quad}$

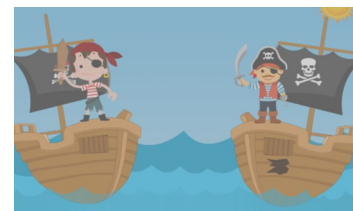
Here are some online doubles games you may want to explore...

Internet safety: always have a grown-up with you when going online.



Archery Doubles by ictgames.com

<https://ictgames.com/mobilePage/archeryDoubles/index.html>



Pirate Doubles by [Futuristic
maths.com](http://Futuristicmaths.com)

<https://www.futuristicmath.com/pirate-games/addition-of-doubles.html>