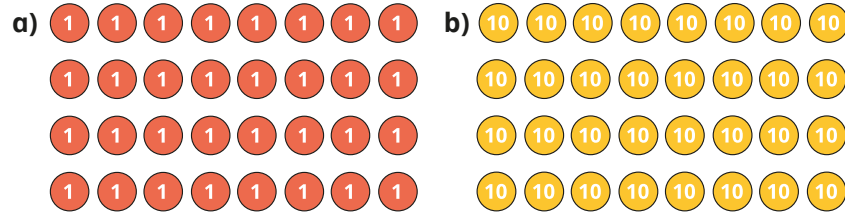


1 Write two multiplication and two division facts shown by each array.



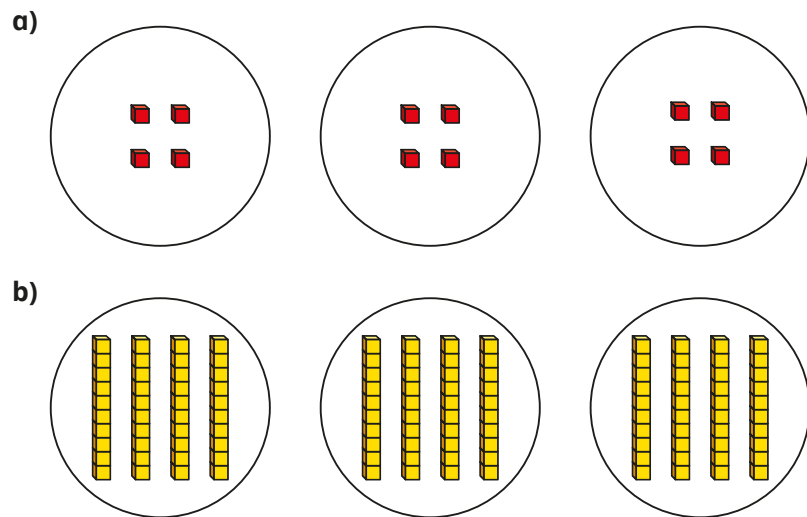
What is the same about the arrays?

What is different?

Talk about it with a partner.



2 Write two multiplications and two divisions shown by each picture.



3

$$6 \times 4 = 24$$

$$24 \div 4 = 6$$

Use the facts to work out the multiplications.

a) 6×40 b) 60×4 c) $240 \div 4$ d) $240 \div 40$

4

Complete the sentences.

a) $8 \text{ ones} \div 2 = \square$ ones

c) $9 \text{ ones} \div 3 = \square$ ones

$8 \text{ tens} \div 2 = \square$ tens

$9 \text{ tens} \div 3 = \square$ tens

$80 \div 2 = \square$

$90 \div 3 = \square$

b) $8 \text{ ones} \div 4 = \square$ ones

d) $10 \text{ ones} \div 10 = \square$ one

$8 \text{ tens} \div 4 = \square$ tens

$10 \text{ tens} \div 10 = \square$ ten

$80 \div 4 = \square$

$100 \div 10 = \square$

5

Fill in the missing numbers.

a) $3 \times \square = 90$

d) $\square \times 20 = 160$

b) $8 \times \square = 240$

e) $360 = 6 \times \square$

c) $\square \times 5 = 150$

f) $280 = \square \times 40$

3

$$6 \times 4 = 24$$

$$24 \div 4 = 6$$

Use the facts to work out the multiplications.

- a) 6×40 b) 60×4 c) $240 \div 4$ d) $240 \div 40$

4

Complete the sentences.

a) $8 \text{ ones} \div 2 = \square \text{ ones}$

c) $9 \text{ ones} \div 3 = \square \text{ ones}$

$8 \text{ tens} \div 2 = \square \text{ tens}$

$9 \text{ tens} \div 3 = \square \text{ tens}$

$80 \div 2 = \square$

$90 \div 3 = \square$

b) $8 \text{ ones} \div 4 = \square \text{ ones}$

d) $10 \text{ ones} \div 10 = \square \text{ one}$

$8 \text{ tens} \div 4 = \square \text{ tens}$

$10 \text{ tens} \div 10 = \square \text{ ten}$

$80 \div 4 = \square$

$100 \div 10 = \square$

5

Fill in the missing numbers.

a) $3 \times \square = 90$

d) $\square \times 20 = 160$

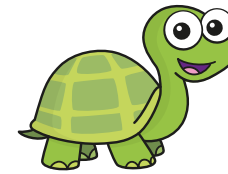
b) $8 \times \square = 240$

e) $360 = 6 \times \square$

c) $\square \times 5 = 150$

f) $280 = \square \times 40$

6



$32 \div 8 = 4$, so
 $320 \div 80 = 40$

Do you agree with Tiny?

Explain your answer.

7

Write $<$, $>$ or $=$ to compare the calculations.

a) 3×40 \bigcirc 30×4

d) 30×6 \bigcirc $30 \div 6$

b) $80 \div 4$ \bigcirc $80 \div 5$

e) 5×30 \bigcirc 4×60

c) $90 \div 30$ \bigcirc $90 \div 3$

f) 2×70 \bigcirc $240 \div 3$

8

48 buttons fill 4 boxes.

How many boxes do 480 buttons fill?

9

It costs £240 for 6 tickets to the zoo.

How much does 1 ticket cost?

10

The mass of 10 cookies is 240 g.

The mass of 20 sweets is 100 g.

What is the total mass of 2 cookies and 3 sweets?