



# Year 1 Maths Home Learning Challenge

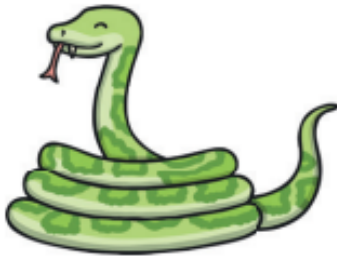
Friday 21st November 2025

This week, we have continued to explore subtraction. We have used the part whole model (as well as our number fact knowledge) to identify a missing part and can use the minus sign (-) to help us record our subtraction number sentences.

Have fun this week with the Subtraction Snakes and Ladders Game. Remember, you can use a part-whole model or counters, or use your number bond knowledge, to solve each subtraction problem.

Think! Which number is the whole? Which numbers are the parts?

## Snakes and Ladders

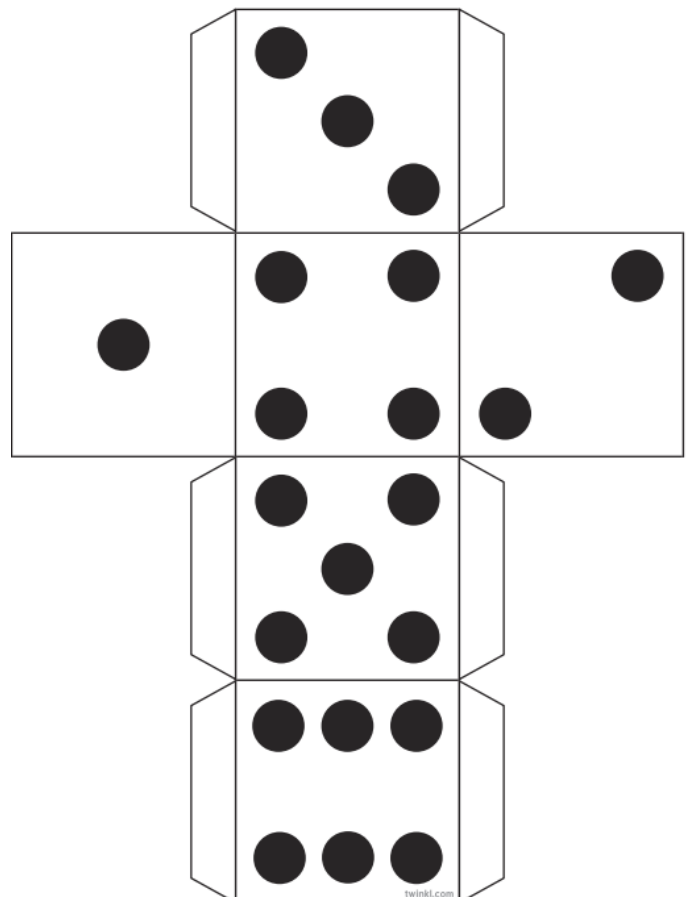
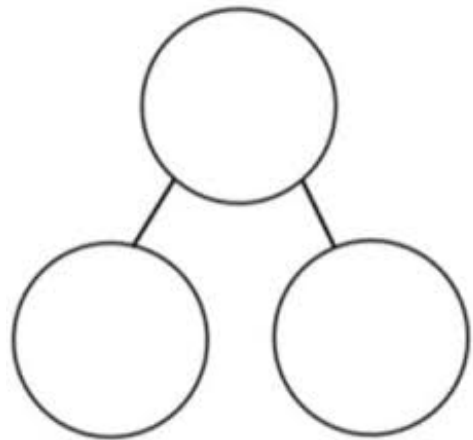


You will need...

- The Snakes and Ladders Board Game board
- A dice
- A counter per player

How to play...

1. Players take it in turns to roll the dice. The player with the highest number goes first, the person with the second highest goes second and so on.
2. The player moves the counter the number of spaces shown on the dice **and completes the calculation on the square they land on.**
3. If a player lands on a snake's head, the player's counter slides down to the square at the snake's tail.
4. If a player lands on the bottom of a ladder, the player's counter climbs up to the square at the top of the ladder.
5. The first player to reach the finish is the winner.



$13-5=$ 21	$8-4=$ 22	$20-8=$ 23	$10-5=$ 24	<b>Finish</b> 25
$18-12=$ 20	$9-3=$ 19	$10-7=$ 18	$15-1=$ 17	$20-10=$ 16
$4-3=$ 11	$14-7=$ 12	$16-3=$ 13	$7-5=$ 14	$5-1=$ 15
$11-6=$ 10	$17-5=$ 9	$15-11=$ 8	$2-2=$ 7	$12-10=$ 6
<b>Start</b> 1	$17-9=$ 2	$6-2=$ 3	$20-4=$ 4	$9-8=$ 5



Why not also have a go at an ordering game this week? Try ordering numbers **BACKWARDS**.

Remember: Internet safety- always have a grown-up with you when you go online.