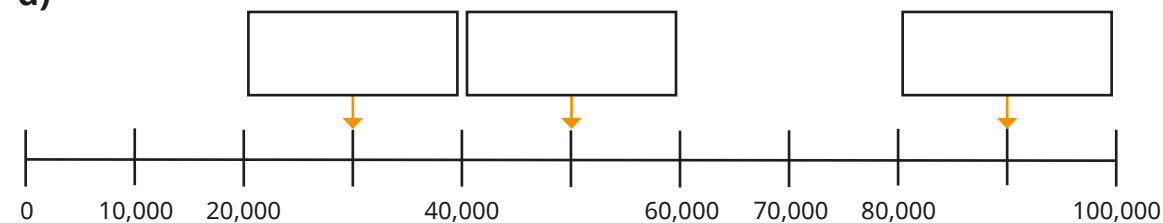


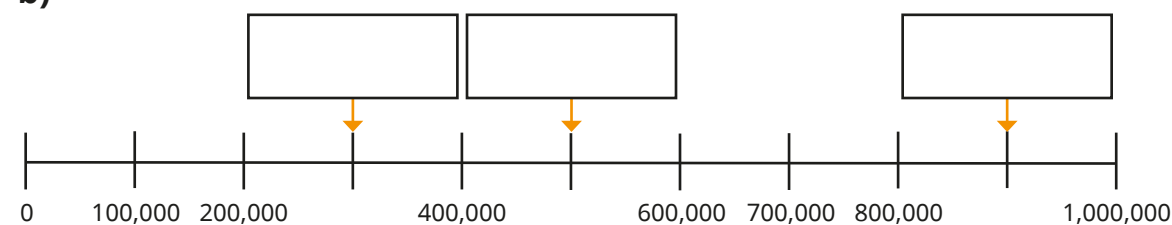
Number line to 1,000,000

1 What numbers are the arrows pointing to?

a)

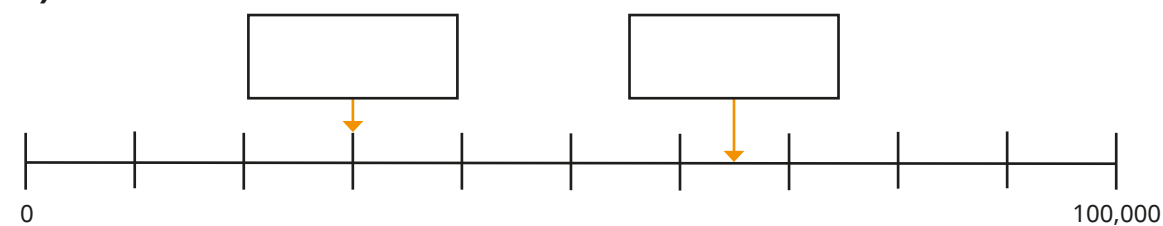


b)

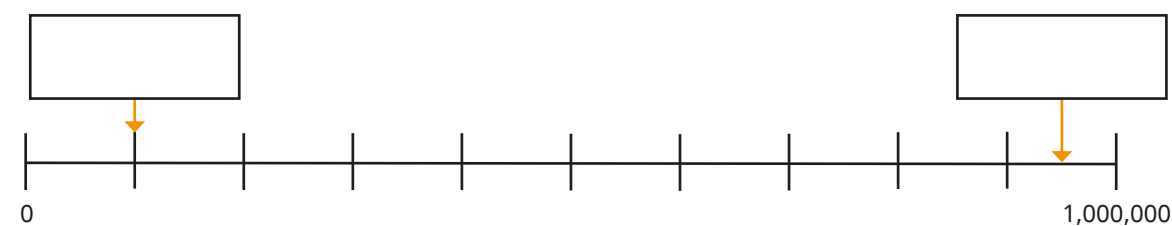


2 What numbers are the arrows pointing to?

a)

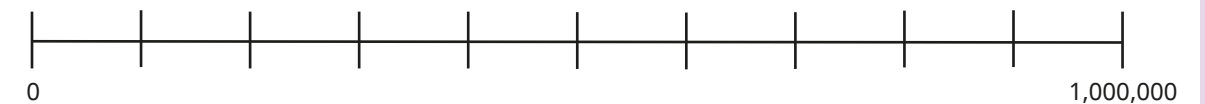


b)



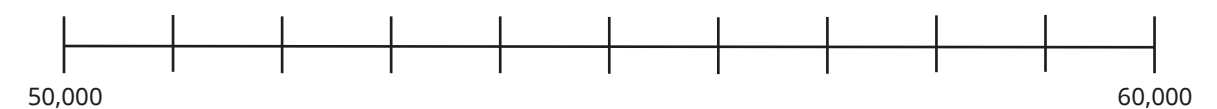
3 Label the numbers on the number line.

500,000 300,000 50,000 850,000



4 Complete the sentences and the number lines.

a)

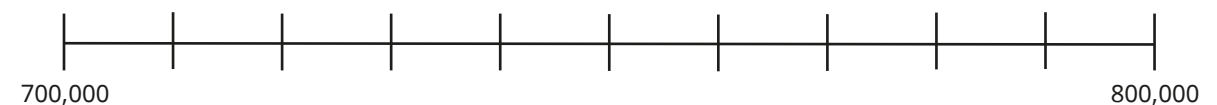


The difference between the start and end points is

There are equal intervals.

The number line is counting up in

b)

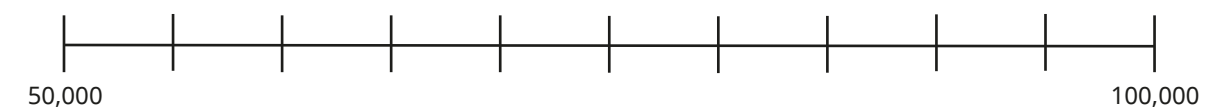


The difference between the start and end points is

There are equal intervals.

The number line is counting up in

c)



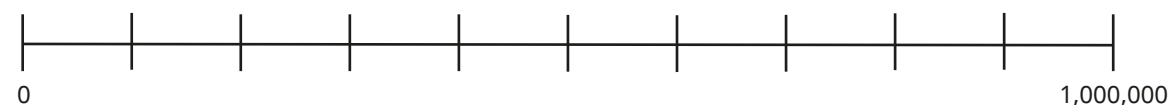
The difference between the start and end points is

There are equal intervals.

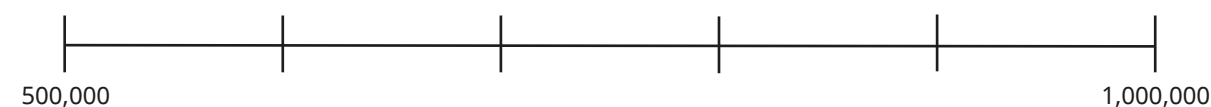
The number line is counting up in

- 5 Draw an arrow to show the position of 550,000 on each number line.

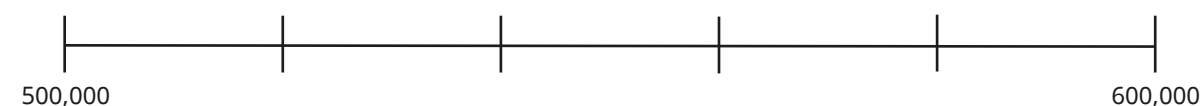
a)



b)

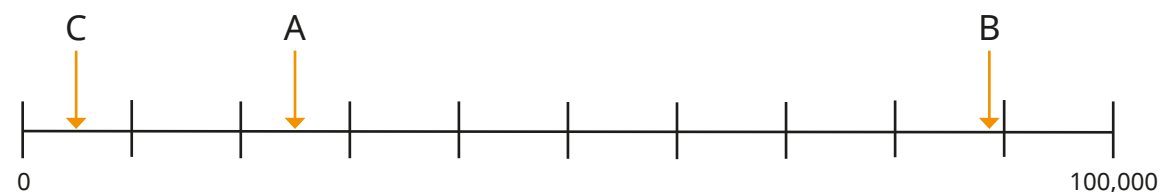


c)



- 6 Estimate the number that each arrow is pointing to.

a)



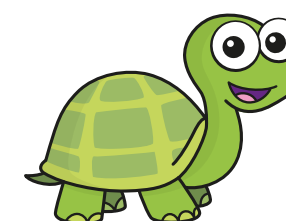
A = B = C =

b)



D = E = F =

7



There are 4 divisions between the start and end of the number line, so I need to divide 1,000,000 by 4
The arrow is pointing to 750,000

- a) What mistake has Tiny made?

- b) What number is the arrow pointing to?

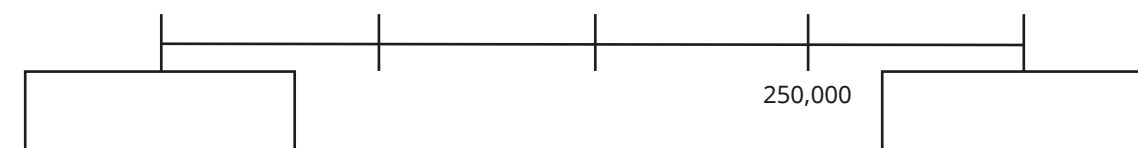
8

- What could the missing numbers be?

a)



b)



Compare answers with a partner.