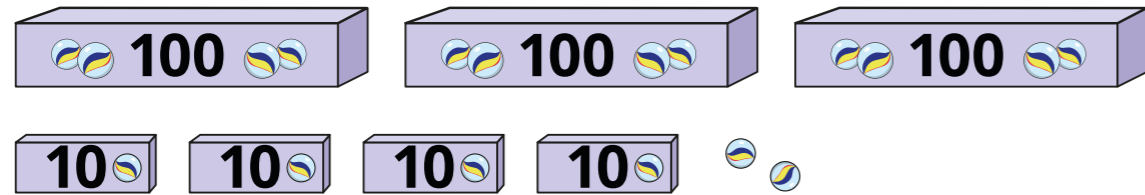
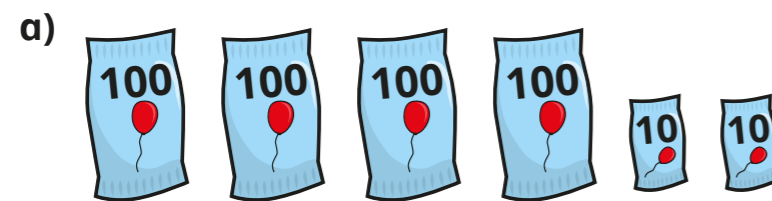


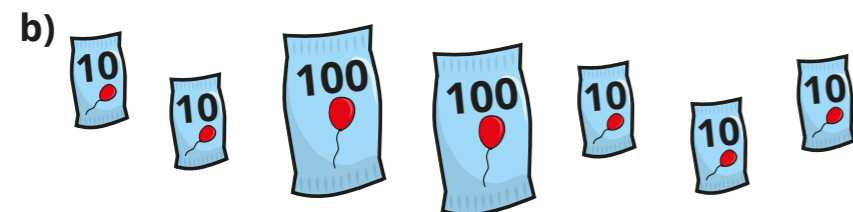
Represent numbers to 1,000

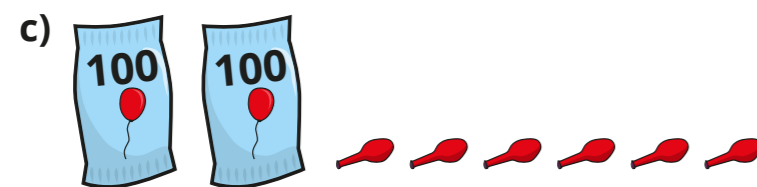
1 How many marbles are there?



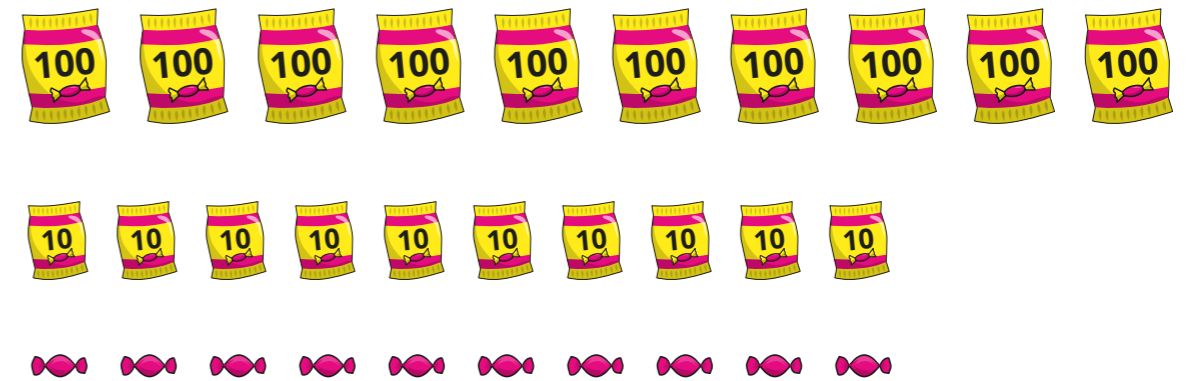
2 How many balloons are there?







3 Here are some sweets.



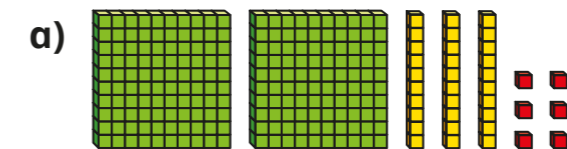
a) Ben takes 458 sweets.

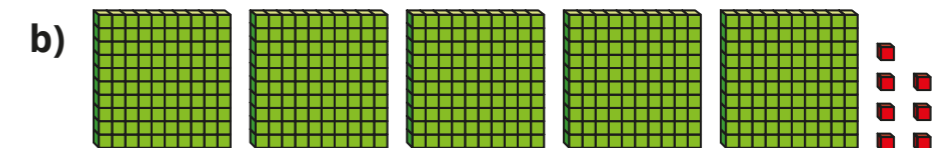
Circle the sweets Ben could have taken.

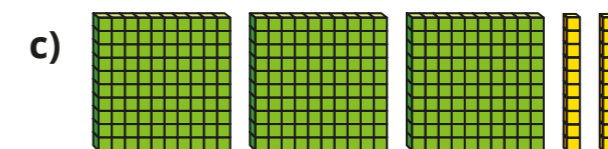
b) Kim takes the rest of the sweets.

How many sweets does Kim take?

4 What numbers are represented?







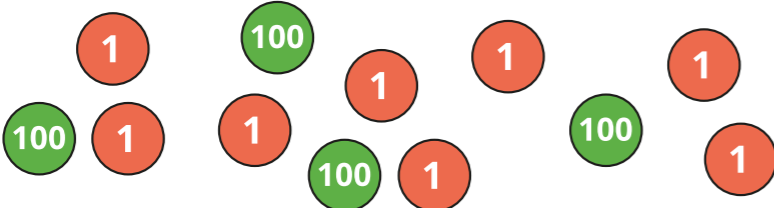
5 Use base 10 to make each number.

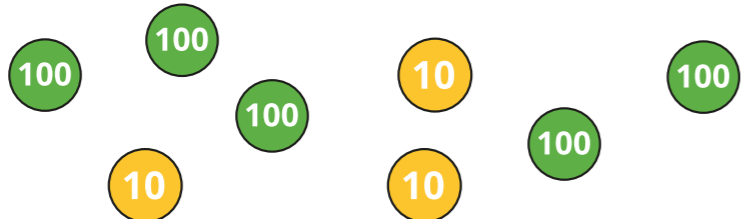
a) 548 b) 232 c) 930 d) 606



6 What numbers are represented?

a) 

b) 

c) 

7 Dani is making the number 634 with place value counters.

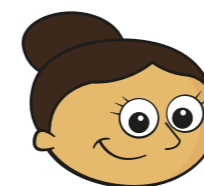


Draw the missing place value counters.



8 Dora, Whitney and Tommy are talking about the number represented.





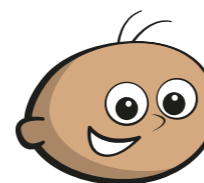
This is the number 64

Dora

This is the number 406



Whitney



This is the number 460

Tommy

a) Who is correct?

Explain your reasons.

b) What mistakes have the other two children made?

