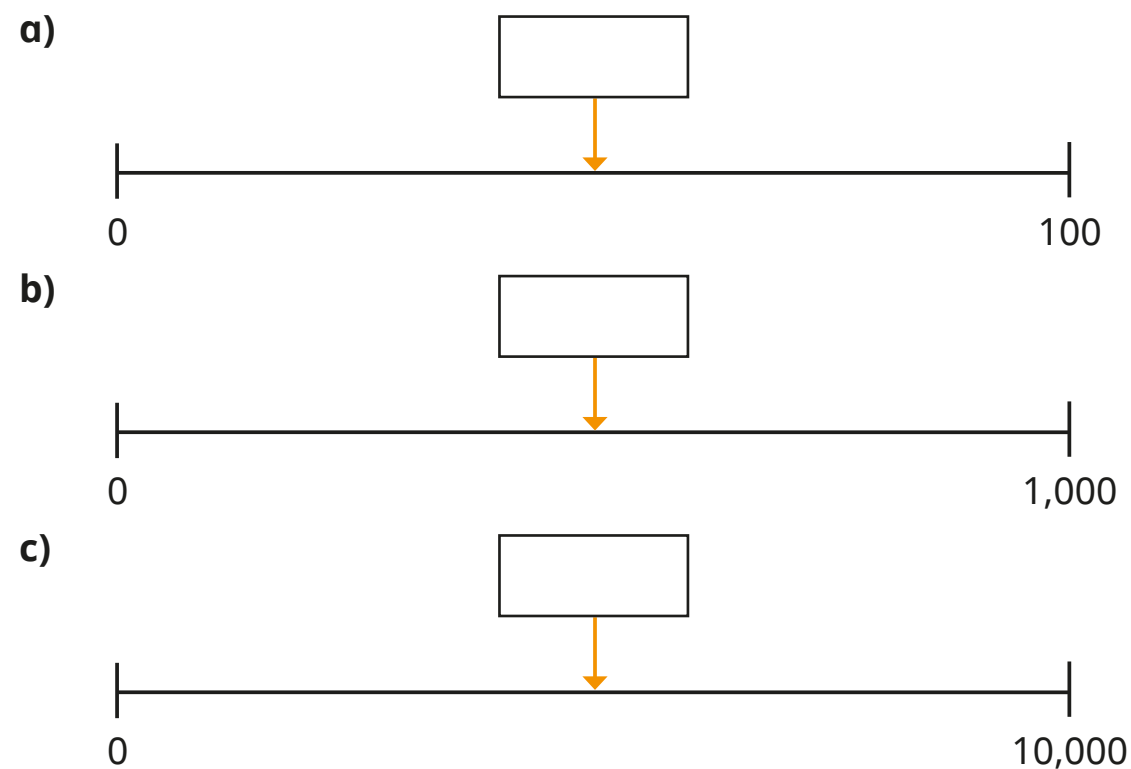
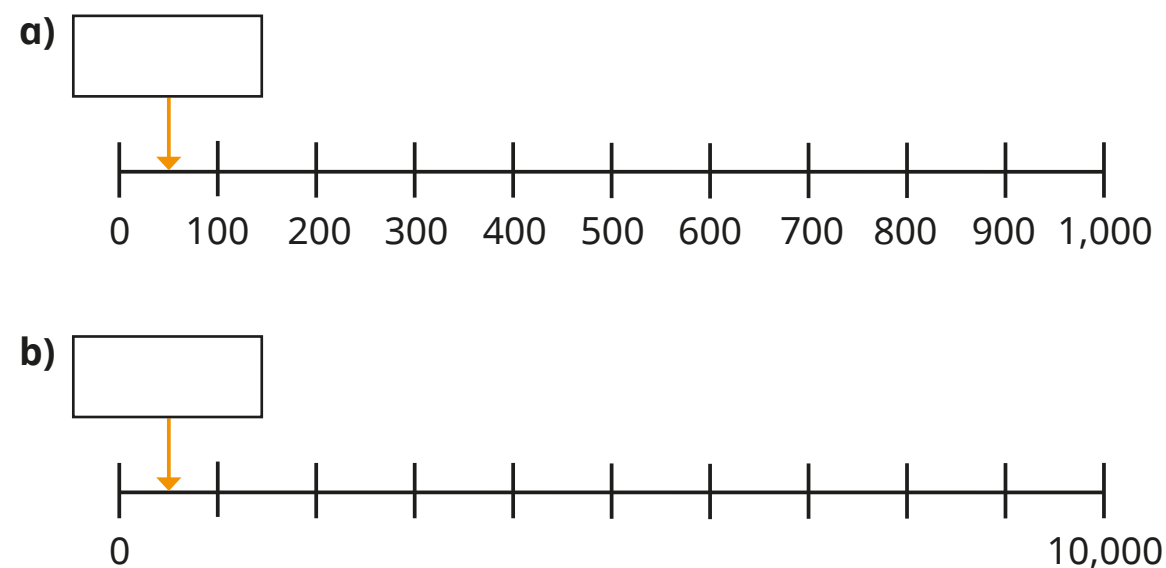


Estimate on a number line to 10,000

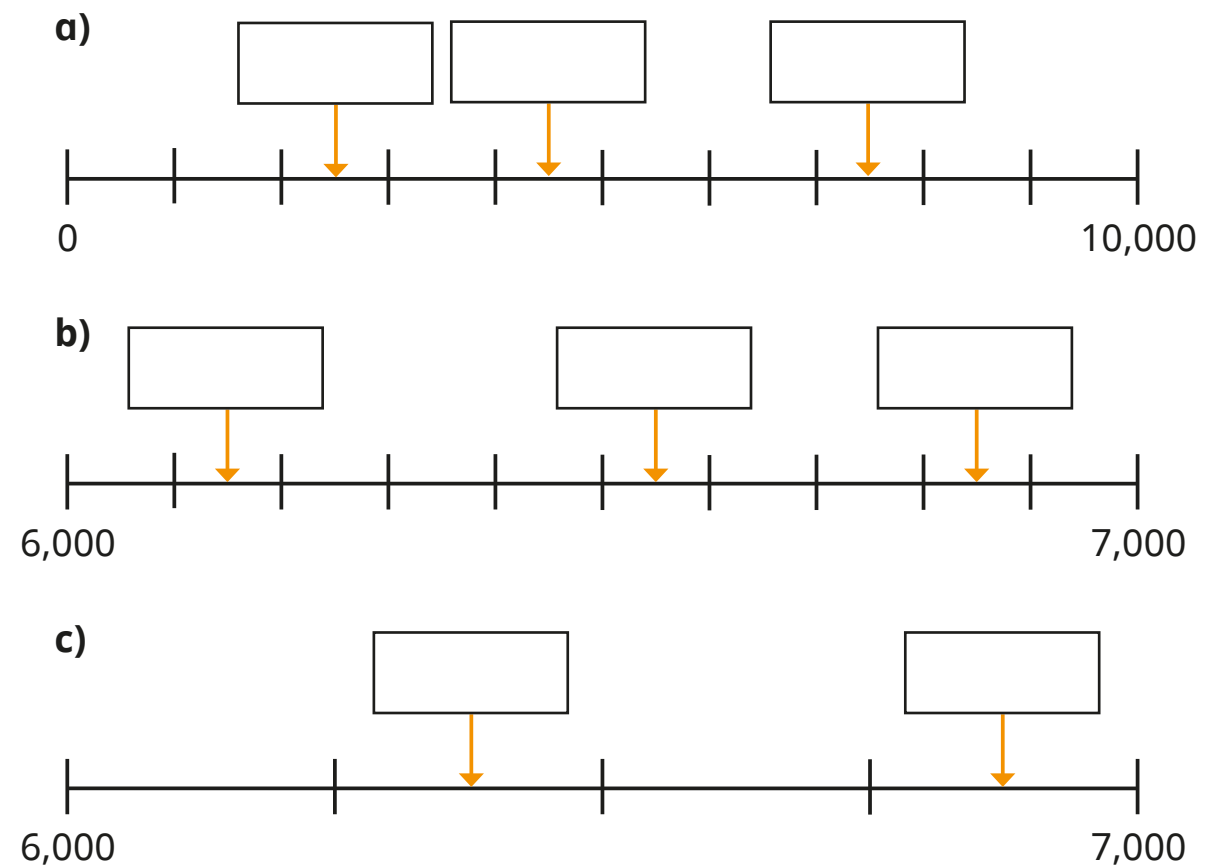
1 What is the value of the midpoint of each number line?



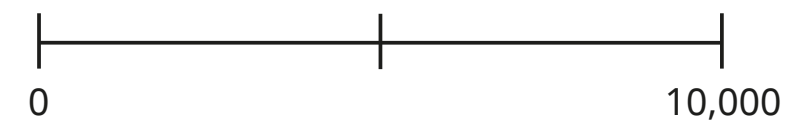
2 Estimate the numbers the arrows are pointing to.



3 Estimate the numbers the arrows are pointing to.



4 Rosie is estimating the positions of some numbers on the number line.



Choose a word to complete the sentences.

left

right

a) 3,000 will be to the _____ of the midpoint.

b) 9,000 will be to the _____ of the midpoint.

c) 999 will be to the _____ of the midpoint.

d) 5,001 will be to the _____ of the midpoint.

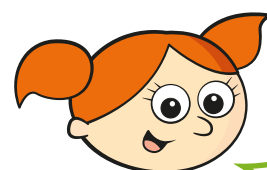
Explain your reasons to a partner.



- 5 Alex and Tommy are estimating the positions of the numbers on different number lines.

A	B	C	D	E
2,000	3,250	5,500	8,000	9,347

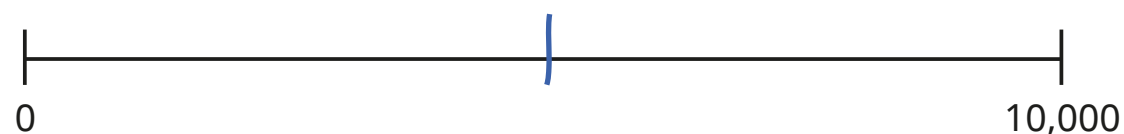
a)



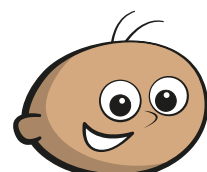
Alex

I split my number line into two equal parts by marking the midpoint.

Use Alex's number line to estimate the positions of the numbers.



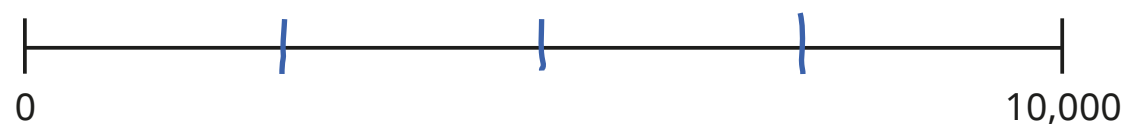
b)



Tommy

I split my number line into four equal parts by marking halfway and then marking half of each interval.

Use Tommy's number line to estimate the positions of the numbers.



Whose method did you think was easier?

Whose method did you think was more accurate?

- 6 Estimate the position of each number on the number line.

3,800

3,450

3,090

3,999



- 7 a) Estimate the values of A, B and C.



A =

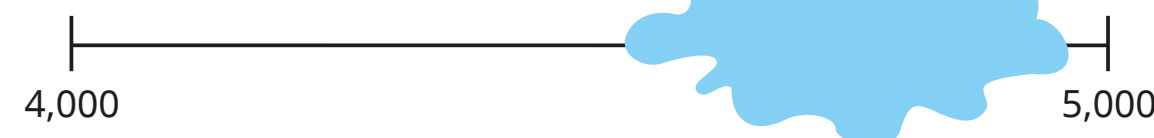
B =

C =

- b) D is greater than A but less than B.

Write three possible values of D.

- 8 Esther labels a number on a number line, but she spills some paint over it.



What number could Esther have labelled?

Compare answers with a partner.